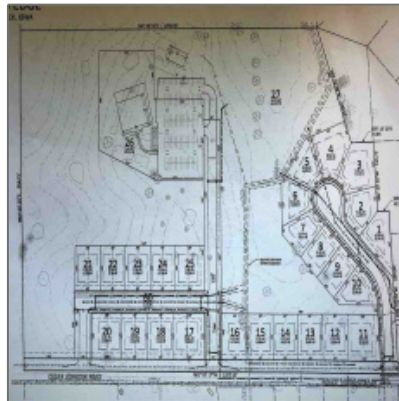




Lots/land For Sale

0 Sqft - 3 Serenity Circle, West Branch, Iowa
52358



Description

Come live on Cedars Edge Golf Course in West Branch! Peaceful country setting surrounded by a beautifully, manicured 9 hole golf course. The subdivision is on the W side of the golf course with views of the #2 & #3 holes. Lots 17-25 located on Lazy Brook Dr are zoned for single family or zero lot homes. Lots located on Serenity Court, a cul-de-sac, 4-10 are suitable for walk outs, 1-3 garden view. Lots 12-16 off of Cedar Johnson Rd are also walk outs, #11 garden view. Work will begin in the Spring, possession of the lots as early as Summer 2019. Covenants & Restrictions are forth coming. Earnest money of 1% is required with purchase agreement. Plat is available, please contact agent for additional information. Lots 17-25 will have an optional fee for for lawn care & snow removal. See the individual listing for approximate lot dimensions, price & description. Cedars Edge is constructing a new club house as well! Great things coming for this development.

Basic Details

Property Type:	Lots/land
Listing Type:	For Sale
Listing ID:	20186049
Price:	\$74,900
Beds:	0
Baths:	0
Half Bathrooms:	0

Square Feet:	0 Sqft
Construction Year:	0
Lot Size:	0.35 Acre
Country:	US
State:	IA
County:	Cedar
City:	West Branch
Zipcode:	52358

Features

✓	Amenities:	Sidewalks, Close To School, Golf Course, Clubhouse, Neighborhood
✓	Possible Finance:	Cash, Conventional
✓	Showing Instructions:	See Remarks

Address [Map](#)

Street:	3 Serenity Circle
Floor Number:	0
Longitude:	W92° 38' 4.8"
Latitude:	N41° 40' 48.8"

Agent Information

Name: Kathy Knoop
Office: Coldwell Banker Real Estate Professionals

Additional Details

Amenities: Sidewalks, Close To School, Golf Course, Clubhouse, Neighborhood
Possible Finance: Cash, Conventional
Showing Instructions: See Remarks
Listing Date: 04/01/2020
Directions: West Branch To Main/Herbert Hoover Hwy, North On Johnson Cedar Rd, Lots Adjacent To Cedars Edge Golf Course.
Lot Dimensions: 119X80X124X114X52