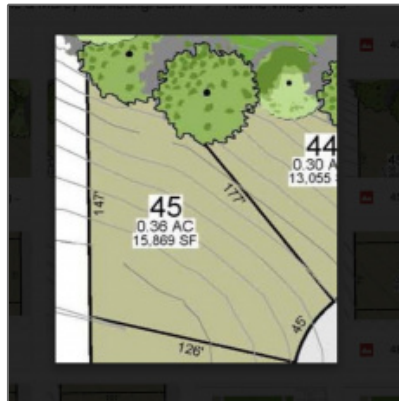




Lots/land For Sale

0 Sqft - Lot 45 Prairie Village Part 1, Tiffin, Iowa
52304



Description

Wonderful single family lots located in the newest upscale subdivision in Tiffin. Many lots are walk-out or have the potential for daylight basements. Large 9+ acre open green space with two ponds. An excellent opportunity to purchase your own lot or the owner has a variety of options to "Build-to-Suit".

Basic Details

Property Type:	Lots/land
Listing Type:	For Sale
Listing ID:	202100381
Price:	\$119,900
Beds:	0
Baths:	0
Half Bathrooms:	0
Square Feet:	0 Sqft
Construction Year:	0
Lot Size:	0.35 Acre
Country:	US

State:	IA
County:	Johnson
City:	Tiffin
Zipcode:	52304

Features

✓	Amenities:	Street Lights
✓	Possible Finance:	Cash, Conventional
✓	Showing Instructions:	Under Construction

Address [Map](#)

Street:	Lot 45 Prairie Village Part 1
Floor Number:	0
Longitude:	W92° 20' 48"
Latitude:	N41° 42' 50.1"

Agent Information



- Mike Bails
- 319.321.5500
- mikebails@urbanacres.com

Additional Details

Amenities: Street Lights

Possible Finance: Cash, Conventional

Showing Instructions: Under Construction

Listing Date: 01/14/2021

Directions: Highway 6, Turn North On Croell Ave, Turn Right On Rolling Hills Dr Or Oakdale Blvd.

Lot Dimensions: 15,869 Sqft