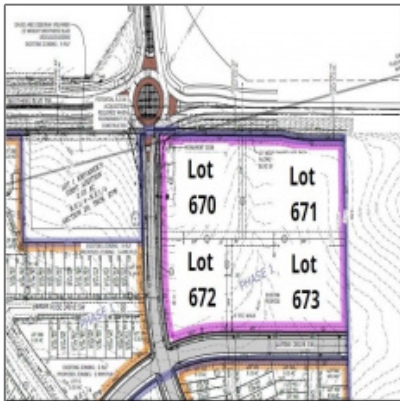


Farms For Sale

0 Sqft - Lot 671 American Prairie, Cedar Rapids, Iowa 52404



Description

American Prairie development located in southwest Cedar Rapids in the College Community and Kirkwood Community College educational district, offers (4) lots for retail and office uses with sizes varying from 0.98 to 1.77 acres including build-to-suit options and long term ground leases. This development has excellent access and visibility and benefits from its proximity to I-380 and Highway 30, the Eastern Iowa Airport, and expanding residential and commercial sub-market in the area and the surrounding communities. Construction on several hundred new residential homes in the area has begun. Member of ownership is licensed to sell real estate in Iowa.

Property [Description](#)

American Prairie development located in southwest Cedar Rapids in the College Community and Kirkwood Community College educational district, offers (4) lots for retail and office uses with sizes varying from 0.98 to 1.77 acres including build-to-suit options and long term ground leases. This development has excellent access and visibility and benefits from its proximity to I-380 and Highway 30, the Eastern Iowa Airport, and expanding residential and commercial sub-market in the area and the surrounding communities. Construction on several hundred new residential homes in the area has begun. Member of ownership is licensed to sell real estate in Iowa.

Basic [Details](#)

Property Type:

Farms

Listing Type:	For Sale
Listing ID:	2205356
Price:	\$464,349
Beds:	0
Total Full Baths:	0
Baths:	0
Half Bathrooms:	0
Square Feet:	0 Sqft
Construction Year:	0
Lot Size:	1.64 Sqft
Country:	US
State:	IA
County:	Linn
City:	Cedar Rapids
Zipcode:	52404
Status Category:	Active

Features

<input checked="" type="checkbox"/>	Possession:	Specified Date
-------------------------------------	-------------	--------------------------------

Address [Map](#)

Street:	Lot 671 American Prairie
Floor Number:	0
Longitude:	E0° 0' 0"
Latitude:	N0° 0' 0"

More [Information](#)

Office Name:	Q4 Real Estate
Elementary School:	College Comm
Jr./Middle School:	College Comm
High School:	College Comm

Virtual Tour:

[Click here](#)

Directions:

From I-380 S/IA-27 S take Exit 13 toward Ely/The Eastern Iowa Airport, turn left on Wright Bros. Blvd. Travel on Wright Bros. Blvd. approx. 0.87 mi. Location will be on right at intersection of Kirkwood Blvd SW

Lot Dimensions:

71438.40

LA1Agent Logon Name:

byerscraigc121

LA1Agent First Name:

Craig

LA1Agent Last Name:

Byers

LO1Main Office ID:

CPRE

PriceChangeTimestamp:

06-17-2022

Agent Information

Name: Craig Byers

Office: Q4 Real Estate

Additional Details

Possession: Specified Date

Listing Date: 06/17/2022

Directions: From I-380 S/IA-27 S Take Exit 13 Toward Ely/The Eastern Iowa Airport, Turn Left On Wright Bros. Blvd. Travel On Wright Bros. Blvd. Approx. 0.87 Mi. Location Will Be On Right At Intersection Of Kirkwood Blvd Sw

Lot Dimensions: 71438.40

Urban Acres Real Estate