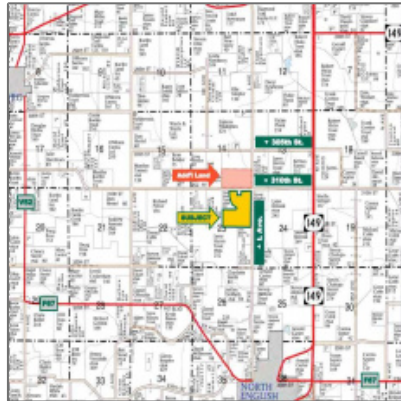


## Lots/land For Sale

0 Sqft - L Ave., North English, Iowa 52316



### Description

This is a nice Iowa County farm with a mixture of rolling cropland, pasture, and timber! See brochure for details. Call Rachelle Heller at 319-800-9316 or Rebecca Frantz at 319-330-2945 to schedule a showing.

### Property Description

This is a nice Iowa County farm with a mixture of rolling cropland, pasture, and timber! See brochure for details. Call Rachelle Heller at 319-800-9316 or Rebecca Frantz at 319-330-2945 to schedule a showing.

### Basic Details

Property Type:	<b>Lots/land</b>
Listing Type:	<b>For Sale</b>
Listing ID:	<b>202203676</b>
Price:	<b>\$877,500</b>
Beds:	<b>0</b>
Baths:	<b>0</b>
Half Bathrooms:	<b>0</b>
Square Feet:	<b>0 Sqft</b>

Construction Year:	<b>0</b>
Lot Size:	<b>130 Sqft</b>
Country:	<b>US</b>
State:	<b>IA</b>
County:	<b>Iowa</b>
City:	<b>North English</b>
Zipcode:	<b>52316</b>
Status Category:	<b>Active</b>
Area:	<b>SW Quadrant</b>
Subdivision:	<b>NA</b>

## Features

Internet:	<b>No</b>
<input checked="" type="checkbox"/> Possible Finance:	<b>Cash, Conventional</b>
<input checked="" type="checkbox"/> Showing Instructions:	<b>See Remarks</b>

## Address [Map](#)

Street:	<b>L Ave.</b>
Floor Number:	<b>0</b>
Longitude:	<b>W93° 54' 49.2"</b>
Latitude:	<b>N41° 33' 8"</b>

## More [Information](#)

Office Name:	<b>Hertz Real Estate Services</b>
Sales Term:	<b>Conventional</b>
Update Date:	<b>09-16-2022 15:55:18</b>
Elementary School:	<b>English Valley</b>
Jr./Middle School:	<b>English Valley</b>
High School:	<b>English Valley</b>
Directions:	<b>From North English: 2 miles north on L Ave. The property is located on the west side of the road.</b>

Zoning:	<b>Ag</b>
Lot Dimensions:	<b>N/A</b>
LA1Agent Logon Name:	<b>i2274</b>
LA1Agent First Name:	<b>Rachelle</b>
LA1Agent Last Name:	<b>Heller</b>
LO1Main Office ID:	<b>490</b>
PriceChangeTimestamp:	<b>09-16-2022</b>

---

### Agent Information

Name: Rachelle Heller  
Office: Hertz Real Estate Services

### Additional Details

---

Possible Finance: Cash, Conventional  
Showing Instructions: See Remarks  
Listing Date: 06/21/2022  
Directions: From North English: 2 Miles North On L Ave. The Property Is Located On The West Side Of The Road.  
Lot Dimensions: N/A

---

**Urban Acres Real Estate**