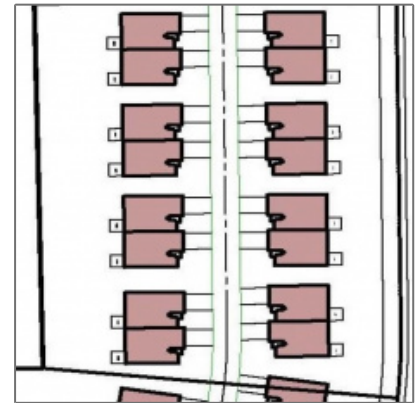
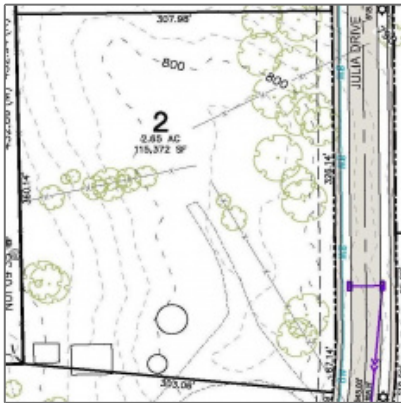




## Lots/land For Sale

0 Sqft - Lot 2 Forevergreen Estates, North Liberty,  
Iowa 52241



### Description

---

Multi-family lot / land zoned RM-8 in North Liberty!!! The new Forevergreen Estates Subdivision is located on the corner of Kansas Ave and Forevergreen Blvd just off the I-380 / Forevergreen Interchange. Steindler Orthopedic and Mercy Hospital have just announced new locations on the West side of Kansas Ave across the street from this location and the University Hospitals is currently building their new North Liberty Hospital Campus down the street. This particular property is zoned RM-8 and the pictures show a model for duplex condos but that is just an option. The final concept, style of units, design and number of units will be determined by the Buyer with approval by the City of North Liberty. This parcel has the potential for duplex condos, townhomes, stacked condos or a combination of any. The current list price is based on 16 duplex condo units but the final price will be based on the final number of units and configuration.

### Property [Description](#)

---

Multi-family lot / land zoned RM-8 in North Liberty!!! The new Forevergreen Estates Subdivision is located on the corner of Kansas Ave and Forevergreen Blvd just off the I-380 / Forevergreen Interchange. Steindler Orthopedic and Mercy Hospital have just announced new locations on the West side of Kansas Ave across the street from this location and the University Hospitals is currently building their new North Liberty Hospital Campus down the street. This particular property is zoned RM-8 and the pictures show a model for duplex condos but that is just an option. The final concept, style of units, design and number of units will be determined by the Buyer with approval by the City of North Liberty. This parcel has the potential for duplex condos, townhomes, stacked condos or a combination of any. The current list price is based on 16 duplex condo units but the final price will be based on the final number of units and configuration.

## Basic [Details](#)

Property Type:	<b>Lots/land</b>
Listing Type:	<b>For Sale</b>
Listing ID:	<b>202203942</b>
Price:	<b>\$760,000</b>
Beds:	<b>0</b>
Baths:	<b>0</b>
Half Bathrooms:	<b>0</b>
Square Feet:	<b>0 Sqft</b>
Construction Year:	<b>0</b>
Lot Size:	<b>2.65 Sqft</b>
Country:	<b>US</b>
State:	<b>IA</b>
County:	<b>Johnson</b>
City:	<b>North Liberty</b>
Zipcode:	<b>52241</b>
Status Category:	<b>Active</b>
Area:	<b>NW Quadrant</b>
Subdivision:	<b>Forevergreen Estates</b>

## Features

<input checked="" type="checkbox"/>	Amenities:	<a href="#">Street Lights, Underground, Neighborhood</a>
	Internet:	<b>Yes</b>
<input checked="" type="checkbox"/>	Possible Finance:	<a href="#">Cash, Conventional</a>
<input checked="" type="checkbox"/>	Showing Instructions:	<a href="#">See Remarks</a>

## Address [Map](#)

Street:	<b>Lot 2 Forevergreen Estates</b>
Floor Number:	<b>0</b>
Longitude:	<b>W92° 21' 53.8"</b>

Latitude: **N41° 43' 34''**

## More [Information](#)

Office Name: **Urban Acres Real Estate Corridor**

Sales Term: **Conventional**

Update Date: **03-27-2023 21:29:12**

Elementary School: **CCA - North Bend**

Jr./Middle School: **Clear Creek**

High School: **Clear Creek**

Directions: **New Forevergreen Estates Subdivision located near the NE corner of the Kansas Ave and Forevergreen Blvd just East of the I-380 and Forevergreen Blvd Intersection.**

Zoning: **RM-8**

Lot Dimensions: **115,372 sqft**

LA1Agent Logon Name: **I628**

LA1Agent First Name: **Mike**

LA1Agent Last Name: **Bails**

LO1Main Office ID: **429**

PriceChangeTimestamp: **07-06-2022**

## Agent Information



- **Mike Bails**
- 319.321.5500
- [mikebails@urbanacres.com](mailto:mikebails@urbanacres.com)

## Additional Details

Amenities: Street Lights, Underground, Neighborhood

Possible Finance: Cash, Conventional

Showing Instructions: See Remarks

Listing Date: 07/07/2022

Directions: New Forevergreen Estates Subdivision Located Near The Ne Corner Of The Kansas Ave And Forevergreen Blvd Just East Of The I-380 And Forevergreen Blvd Intersection.  
Lot Dimensions: 115,372 Sqft

---

**Urban Acres Real Estate**