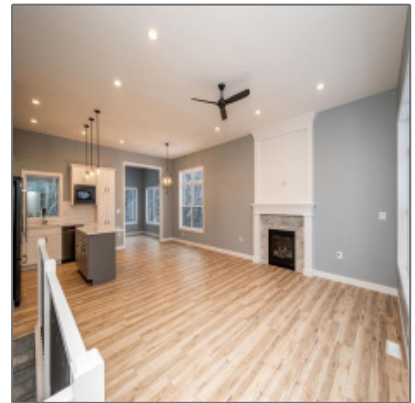




Residential For Sale

2,950 Sqft - 4746 Preston Ln, Iowa City, Iowa
52246



Description

This large ranch style home from Navigate Homes makes an appearance in Cardinal Pointe West. It has a very open main level, as you walk in the front entry you walk through the great room with 10' ceilings (and optional fireplace). The kitchen has a center island with breakfast bar. The dining area opens to the over-sized covered deck. The spacious master is on the back of the house and has a large walk-in closet & a private bath with (optional tile) shower. Fully finished, walk-out lower level has a large rec room & optional wet bar. *Photos are of a similar but not identical property*

Property Description

This large ranch style home from Navigate Homes makes an appearance in Cardinal Pointe West. It has a very open main level, as you walk in the front entry you walk through the great room with 10' ceilings (and optional fireplace). The kitchen has a center island with breakfast bar. The dining area opens to the over-sized covered deck. The spacious master is on the back of the house and has a large walk-in closet & a private bath with (optional tile) shower. Fully finished, walk-out lower level has a large rec room & optional wet bar. *Photos are of a similar but not identical property*

Basic Details

Property Type:	Residential
Listing Type:	For Sale
Listing ID:	202302254

Price:	\$599,900
Beds:	5
Total Full Baths:	3
Baths:	3
Half Bathrooms:	0
Square Feet:	2,950 Sqft
Construction Year:	2023
Lot Size:	0 Acre
Country:	US
State:	IA
County:	Johnson
City:	Iowa City
Zipcode:	52246
Status Category:	Active
Area:	Iowa City
Subdivision:	Cardinal Pointe West

Features

Family Room Level:	Lower
--------------------	--------------



New Construction

Internet:	Yes
-----------	------------

Elevators:	Yes
------------	------------

Primary Bedroom:	Main
------------------	-------------

Address [Map](#)

Street:	4746 Preston Ln
---------	------------------------

Floor Number:	0
---------------	----------

Longitude:	W92° 23' 40.1"
------------	-----------------------

Latitude:	N41° 40' 3.8"
-----------	----------------------

More Information

Office Name: **Urban Acres Real Estate Corridor**

Sales Term: **Conventional**

✓ Ownership Type: **Single Family**

Update Date: **07-23-2023 17:39:25**

Elementary School: **Borlaug**

Jr./Middle School: **Northwest**

High School: **West**

Directions: **Camp Cardinal Blvd - West on Kennedy
Parkway - South on Preston Ln.**

Zoning: **Residential**

Lot Dimensions: **0**

LA1Agent Logon Name: **I628**

LA1Agent First Name: **Mike**

LA1Agent Last Name: **Bails**

LO1Main Office ID: **429**

PriceChangeTimestamp: **04-21-2023**

Agent Information



- **Mike Bails**
- 319.321.5500
- mikebails@urbanacres.com

Additional Details

New Construction:

Listing Date: 04/21/2023

Directions: Camp Cardinal Blvd - West On Kennedy Parkway - South On Preston Ln.